



DVR Examiner

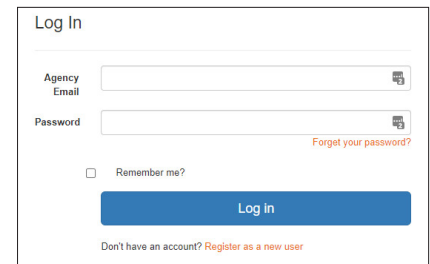
by DMEforensics

Easy-to-Use Forensic Software Automating Video Recovery from DVRs

V3.1 Installation Help Guide

Create an Account on our Portal

- Visit portal.dmeforensics.com/portal.
- Click the 'Register as a new user' link below the Log in Button.
- Complete the form and Click "Register Now".
- To link your portal account to your dongle license, send an email to support@dmeforensics.com with your name, the email address used to create your portal account, and your dongle ID.



Download the Software

- Log into the portal.
- Under the 'Latest Release' section, click to download the latest version of DVR Examiner.
- A zip folder will automatically download.

Latest Release

DVR Examiner 3.1

[Download](#)

Released: Aug-30-2021

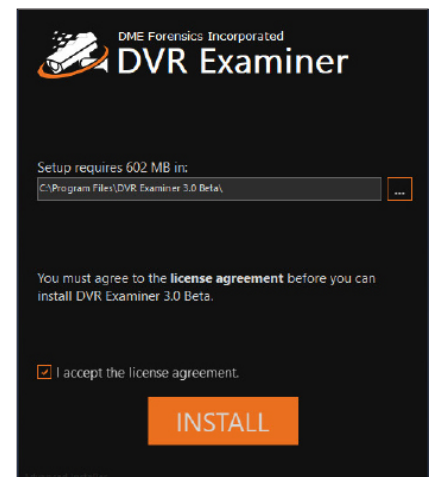
[Release Notes](#)

Install DVR Examiner

- Unzip the downloaded folder to a location of your choosing.
- In the unzipped folder, double-click on DVR_Examiner_Setup.exe.
- Follow the on-screen instructions for installation.

Use DVR Examiner

- Before starting DVR Examiner, insert the dongle into a USB port on the computer running DVR Examiner.
- Double-click on the DVR Examiner icon created on your desktop during installation.
- Verify your subscription status appears at the lower left of the Start Screen.



You are ready to use DVR Examiner!

Access Resources on the Portal

- Submit a new Support Ticket or DVR Request.
- Download the latest release.
- Download native players.
- Update your version of DVR Examiner.