

# DVR Examiner 3

by DMEforensics

## More. Easier. Faster

### Quick Start Guide



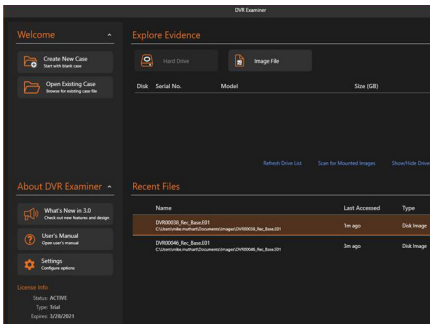
#### Connect the Source Data

##### Access the Hard Drive within the DVR

- Disconnect the power and data cable from the hard drive.

##### Protect the Data on the Hard Drive

- Connect the hard drive to a write blocker.
- Connect the write blocker to the PC via the fastest connection possible.



#### Start DVR Examiner

- Before starting DVR Examiner, insert the dongle into a USB port.
- Start DVR Examiner
- Verify your license information in the “About DVR Examiner” panel of the Start screen.

##### Select the Source Drive

- From the “Explore Evidence” panel, highlight a hard drive from the list and select “Add Source”, or click “Image File” and browse to your image file.

##### Verify that the source data is supported

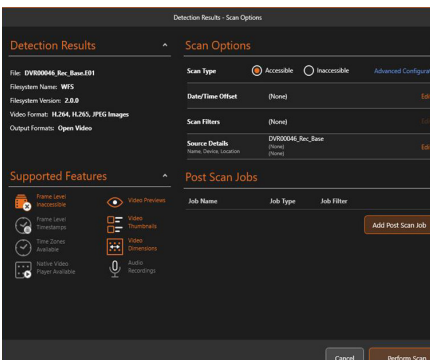
- After you select the physical disk or image file, a detection results screen will appear.
- If the source data is supported, the Detection Results screen will populate with the detection results. See image below.
- If the source data is not supported, you may receive a “Support Pending” screen or an “Unrecognized Filesystem Detected” screen.
- To learn more about possible detection types, refer to the User’s Manual.

# DVR Examiner 3

by DMEforensics

## More. Easier. Faster

### Quick Start Guide



## Scan Configuration

### Scan Type, Set Filters, and Create Post Scan Jobs

- Select "Accessible" or "Inaccessible" Scan Type.
- Set filters or create post-scan jobs. To learn more about Filters and Post Scan Jobs, refer to the User's Manual.
- Click "Perform Scan".

### Save the Case

- It is recommended that you save your case as soon as the scan is complete.
- All active jobs must be completed in order to save a case. Click on "Jobs" in the Case Explorer panel to see the status of each job displayed in the Details panel.

### Review the Clip List

- The clip list will be populated with all the clips found on the hard drive.
- Select Tools --> Date/Time Offsets to correct any discrepancies between the actual date/time and the DVR date/time.
- The clip list Details panel will display information pertaining to all the clips or each individual clip you click on.

## Reviewing the Data

### Previewing Clips

- Double click on a clip to preview the clip. Not all file systems support preview.
- Player controls are located below the preview clip and help you navigate through a clip.
- Clip information, including resolution, size, and start and end time is displayed.
- Insert notes and tags.

### Export Clips

- Highlight the clips to export. Click 'Export Selected Clips' from the Ribbon icons.
- The selected clips will be displayed in a new Export tab.
- Select export options on the right and begin export.
- When complete, you can open the Export Folder or the Export Report.

